



HARVEY ROBINSON

Offers In Excess Of £225,000

Berkley Street

Eynesbury, PE19 2NB

PROPERTY SUMMARY

Harvey Robinson estate agents in St Neots are excited to offer for sale this two bedroom end of terraced character cottage located in Eynesbury and being a short walk away from the town centre.

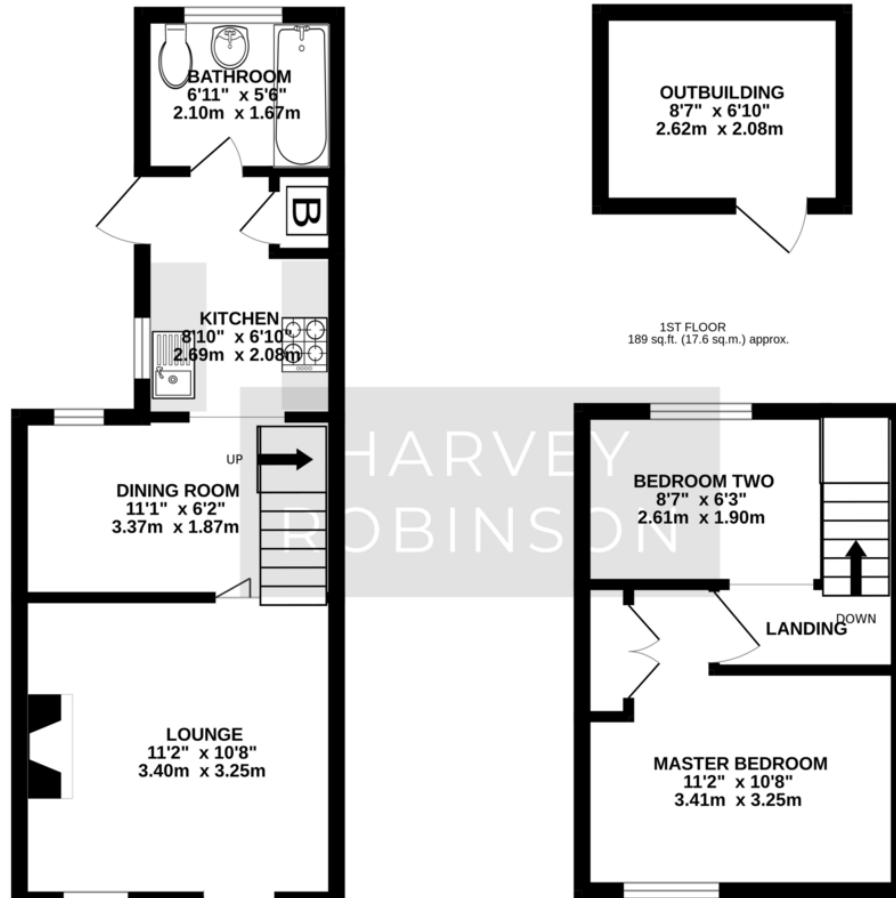
The property boasts period features throughout, and in full compromises of a lounge with an open fire place, a dining room, kitchen, bathroom to the ground floor. On the first floor you will find two bedrooms, bedroom one includes built in wardrobes. Outside, the property benefits from a West facing rear garden.





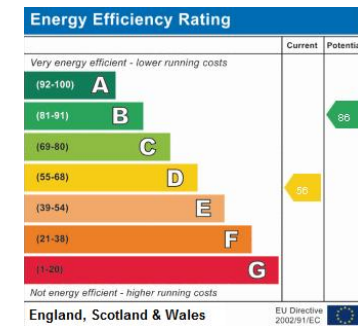
GROUND FLOOR
282 sq.ft. (26.2 sq.m.) approx.

2ND FLOOR
59 sq.ft. (5.5 sq.m.) approx.



FAQs

Postcode for SatNav: PE19 2NB
 What3Words location:
 ///mega.carry.navigate
 Council tax: A
 Age of property: 1890's
 Vendor Onward Movement: Upsizing
 Locally
 Primary catchment: Eynesbury CofE C
 Primary School
 Secondary catchment: Ernulf Academy
 Water meter: Yes



Agents Note: Whilst every care has been taken to prepare these particulars, they are for guidance purposes only. All measurements are approximate and are for general guidance purposes only and whilst every care has been taken to ensure their accuracy, they should not be relied upon and potential buyers/tenants are advised to recheck the measurements

HARVEY ROBINSON

OFFICE ADDRESS

22 Market Square, St Neots,
Cambridgeshire, PE19 2AF

CONTACT

01480 454040
stneots@harveyrobinson.co.uk
www.harveyrobinson.co.uk