



HARVEY ROBINSON

Offers In Excess Of
£425,000
Devoke Close
Huntingdon, PE29 6XE

Harvey Robinson Estate Agents are delighted to bring to market this Four Bedroom Family Home in the sought after area of Stukeley Meadows. This spacious home offers ample living accommodation by converting part of the garage to create a study/snug and an extended large conservatory/family room with warm room for all year round use. The property also offers a separate lounge, kitchen/dining room, separate utility room, cloakroom, three double bedrooms, one large single room with an en-suite to master bedroom and a family bathroom. Outside, the property benefits from an enclosed rear garden, storage at the front of the converted garage and off road parking. For further information, please contact our Huntingdon Office.

Stukeley Meadows is a very sought after area within Huntingdon which is thoughtfully situated close to all amenities. Huntingdon's town centre is located a few minutes' drive from Stukeley Meadows and offers a vast range of shops, library, vets & GP surgeries. Using a walkway located at the end of Lake Way, is a shortcut to Huntingdon's Train Station which is only a 10 minute walk from the property itself making this an ideal location for commuters looking for easy access into London's Kings Cross that gets you there within the hour.

Supermarkets Aldi & Lidl are also located within a 10 minute walk from the property as well as having a Tesco Metro on the estate. Major road links A14 & A1 are also within easy reach. Stukeley Meadows is within the popular school catchments of Stukeley Meadows Primary School & St. Peters Secondary School. Nothing is too far away from the estate whether it is by a short drive or walk.

- 4 
- 2 
- 4 



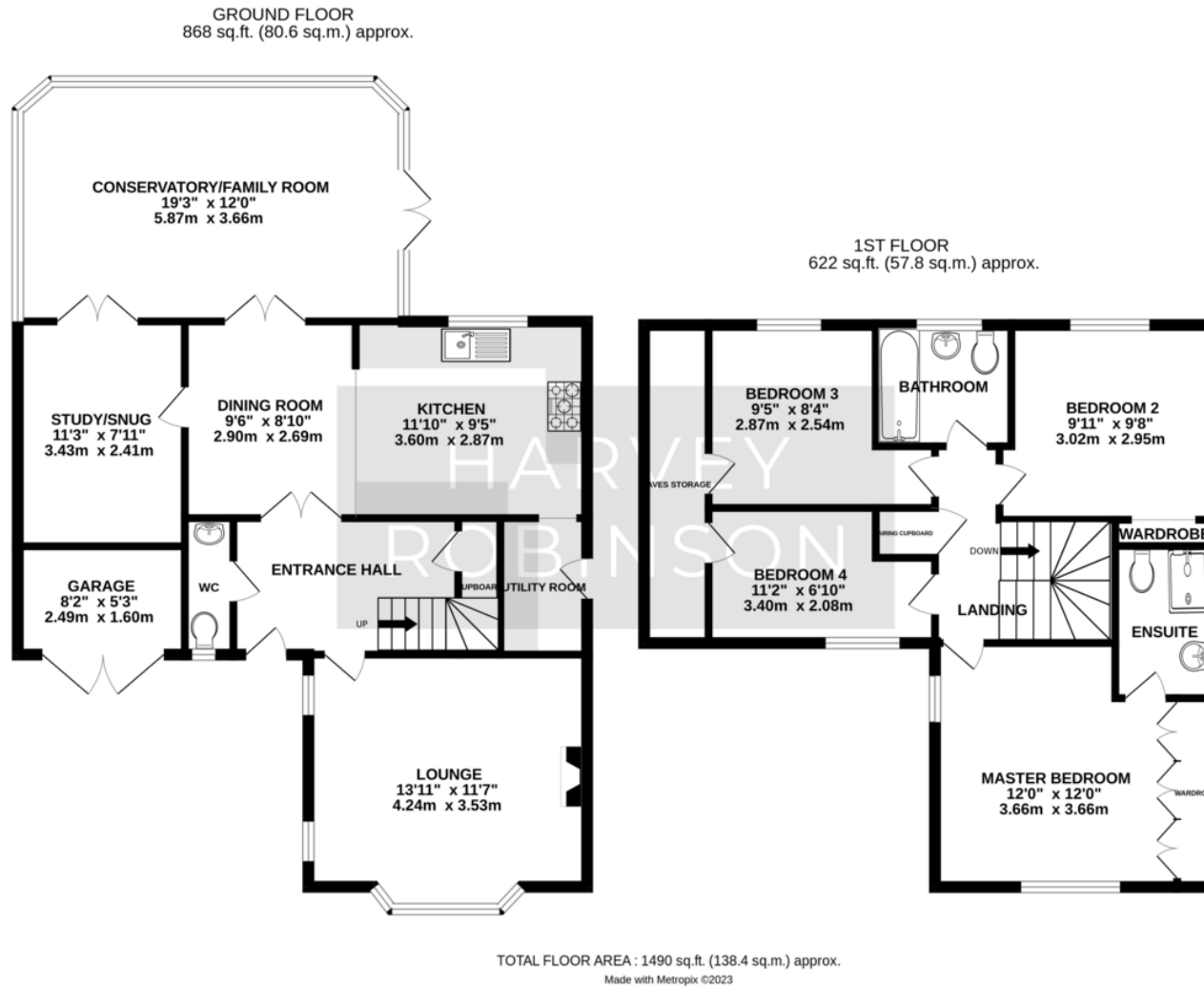


FAQs

Tenure: Freehold
Council Tax Band: E
Vendors Onward Movements: Downsizing
Water Meter: Yes
Age of Boiler: 2015, serviced
Age of Windows: 2015
Age of Conservatory: 2013, reroofed 2018 with warm roof
Loft: Part boarded with ladder
Rear Aspect: South West

EPC TBC

Agents Note: Whilst every care has been taken to prepare these particulars, they are for guidance purposes only. All measurements are approximate and are for general guidance purposes only and whilst every care has been taken to ensure their accuracy, they should not be relied upon and potential buyers/tenants are advised to recheck the measurements



HARVEY ROBINSON

OFFICE ADDRESS

91 High Street, Huntingdon,
Cambridgeshire, PE29 3DP

CONTACT

01480 454040
huntingdon@harveyrobinson.co.uk
www.harveyrobinson.co.uk