



HARVEY ROBINSON

£325,000

12 Carisbrooke Way

Eynesbury, PE19 2SP

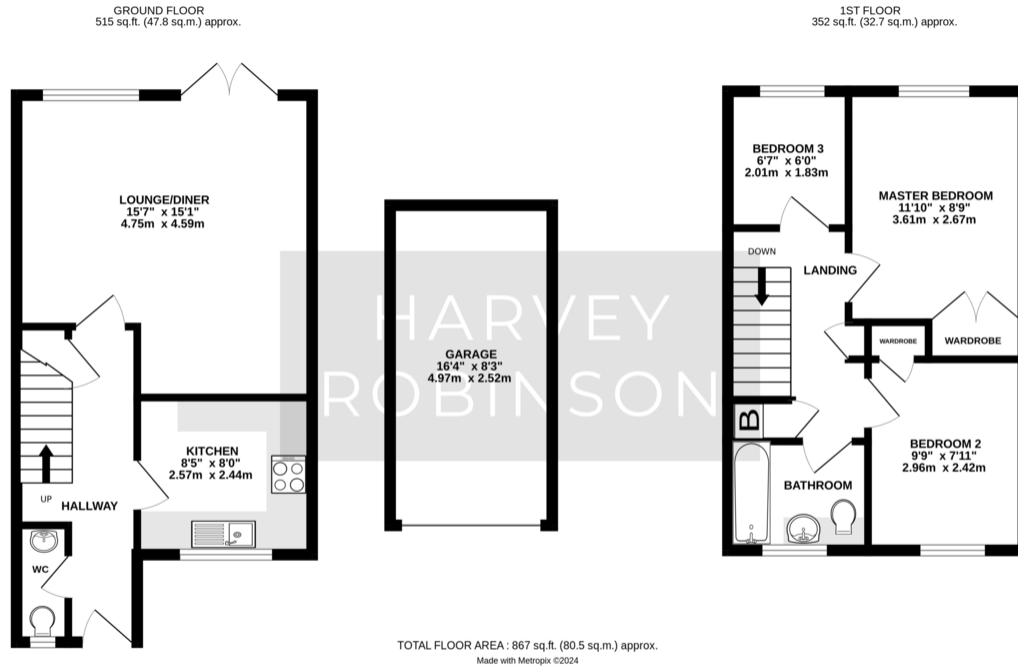
PROPERTY SUMMARY

Harvey Robinson Estate Agents in St Neots are pleased to offer for sale this well presented semi-detached family home, benefitting from a garage with power connected, and spacious driveway with off-road parking for several cars. The property is well situated within a quiet cul-de-sac in the popular Parklands estate near the Marina and Conservation Area.

The ground floor accommodation includes a spacious entrance hall, cloakroom, bright and airy lounge/diner with doors







FAQs

Type Here

Energy Efficiency Rating		
	Current	Potential
<i>Very energy efficient - lower running costs</i>		
(92-100) A		
(81-91) B		89
(69-80) C	74	
(55-68) D		

Agents Note: Whilst every care has been taken to prepare these particulars, they are for guidance purposes only. All measurements are approximate and are for general guidance purposes only and whilst every care has been taken to ensure their accuracy, they should not be relied upon and potential buyers/tenants are advised to recheck the measurements

HARVEY ROBINSON

OFFICE ADDRESS

22 Market Square, St Neots,
Cambridgeshire, PE19 2AF

CONTACT

01480 454040
stneots@harveyrobinson.co.uk
www.harveyrobinson.co.uk