

A two-story brick house with a white front door and a large tree in the garden. The house has a tiled roof and a chimney. The garden is lush with green grass and various plants. A large tree with yellow-green leaves is in the center of the garden. To the left, there are green bushes. To the right, there is a paved path leading to the back of the house. The sky is blue with some clouds.

HARVEY ROBINSON

Offers In Excess Of  
£240,000

Highfield Avenue

Alconbury Weston, PE28 4JS



Harvey Robinson Estate Agents are delighted to offer this extended Three Bedroom Semi Detached Home in the popular area of Alconbury Weston. The property benefits from entrance hall, 20ft open plan lounge/diner, separate kitchen, additional family room, shower room and utility room to the ground floor. The first floor benefits three bedroom, two of which are doubles and a bathroom. Outside, the property comprises an enclosed rear garden. For further information or to arrange a viewing, please contact our Huntingdon office.

Located approximately 6 miles from Huntingdon, Alconbury Weston is a quiet village that has a lot to offer people of all ages. Whether you work in and around London or Cambridge and want an escape from the bustle of city life or would prefer to raise a family surrounded by the beautiful English countryside, Alconbury Weston could be the perfect match for you.

Huntingdon itself is one of Cambridgeshire's best-loved locations. It's famous for being the birthplace of Oliver Cromwell, and there are several historic buildings in and around the town, which give it plenty of character. It is a popular location for people of all ages with its great local amenities and riverside walks. In the town itself, you'll find many familiar High Street brands, such as WH Smiths, Boots, TK Maxx and more. There are also some great pubs and restaurants in the town.

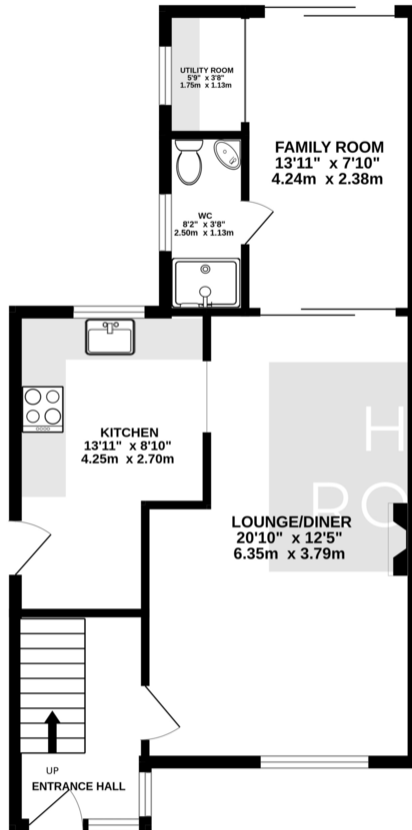
Huntingdon mainline station with direct access to London as are main road links such as the A1 and A14.

The property lies in the catchment of primary schools Alconbury CofE School and Ermine Street Church Academy in Little Stukeley for secondary education Sawtry Village Academy and Hinchingsbrook School.

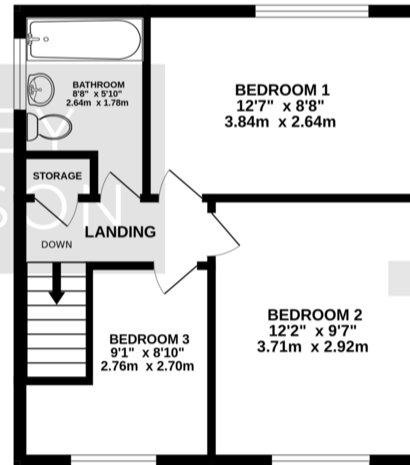




GROUND FLOOR  
559 sq.ft. (51.9 sq.m.) approx.



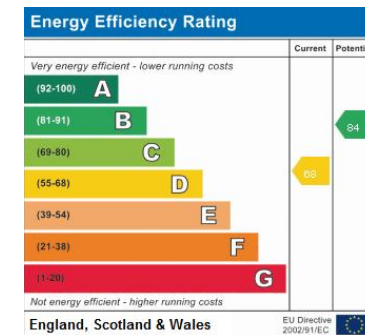
1ST FLOOR  
384 sq.ft. (35.7 sq.m.) approx.



TOTAL FLOOR AREA: 944 sq.ft. (87.7 sq.m.) approx.  
Made with Metropix ©2023

## FAQs

Tenure: Freehold  
Council Tax Band: B  
Water Meter: Yes  
Vendors Onward Movements: No onward chain  
Primary School Catchment: Alconbury  
Secondary School Catchment: Sawtry



Agents Note: Whilst every care has been taken to prepare these particulars, they are for guidance purposes only. All measurements are approximate and are for general guidance purposes only and whilst every care has been taken to ensure their accuracy, they should not be relied upon and potential buyers/tenants are advised to recheck the measurements

HARVEY ROBINSON

### OFFICE ADDRESS

91 High Street, Huntingdon,  
Cambridgeshire, PE29 3DP

### CONTACT

01480 454040  
huntingdon@harveyrobinson.co.uk  
www.harveyrobinson.co.uk