



HARVEY ROBINSON

£350,000

Church Road

Great Stukeley, PE28 4AL

PROPERTY SUMMARY

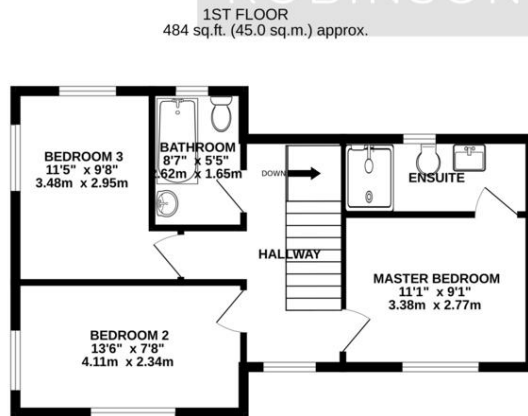
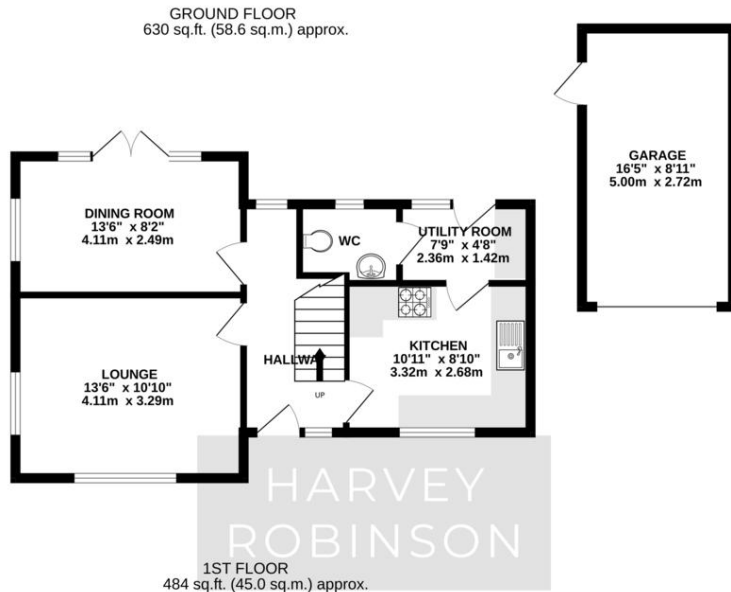
Harvey Robinson's Estate Agents in Huntingdon are delighted to offer For Sale this Three Bedroom Detached Family Home in the popular village of Great Stukeley. Briefly the property comprises, Entrance Hall, Lounge, Kitchen, Utility Room, Dining Room, Cloakroom, Three Bedrooms with Ensuite To Master, Family Bathroom, Front and Rear Gardens, Garage and Ample Off Road Parking. This property is a must see to truly appreciate, please contact our Huntingdon Office for further information.



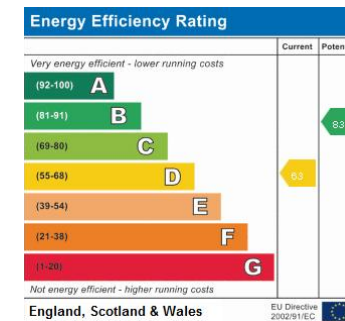


FAQs

Tenure: Freehold
 Council Tax: Band D, £2011.26 per annum
 Current Owner: Owned for 6 Years
 Water Meter: Yes
 Loft: Part Boarded, Light and Ladder



TOTAL FLOOR AREA : 1114 sq.ft. (103.5 sq.m.) approx.
 Made with Metropix ©2023



Agents Note: Whilst every care has been taken to prepare these particulars, they are for guidance purposes only. All measurements are approximate and are for general guidance purposes only and whilst every care has been taken to ensure their accuracy, they should not be relied upon and potential buyers/tenants are advised to recheck the measurements

HARVEY ROBINSON

OFFICE ADDRESS

91 High Street, Huntingdon,
 Cambridgeshire, PE29 3DP

CONTACT

01480 454040
huntingdon@harveyrobinson.co.uk
www.harveyrobinson.co.uk