



HARVEY ROBINSON

Offers In Excess Of  
**£525,000**  
Silverweed  
Eaton Ford, PE19 7GZ

## PROPERTY SUMMARY

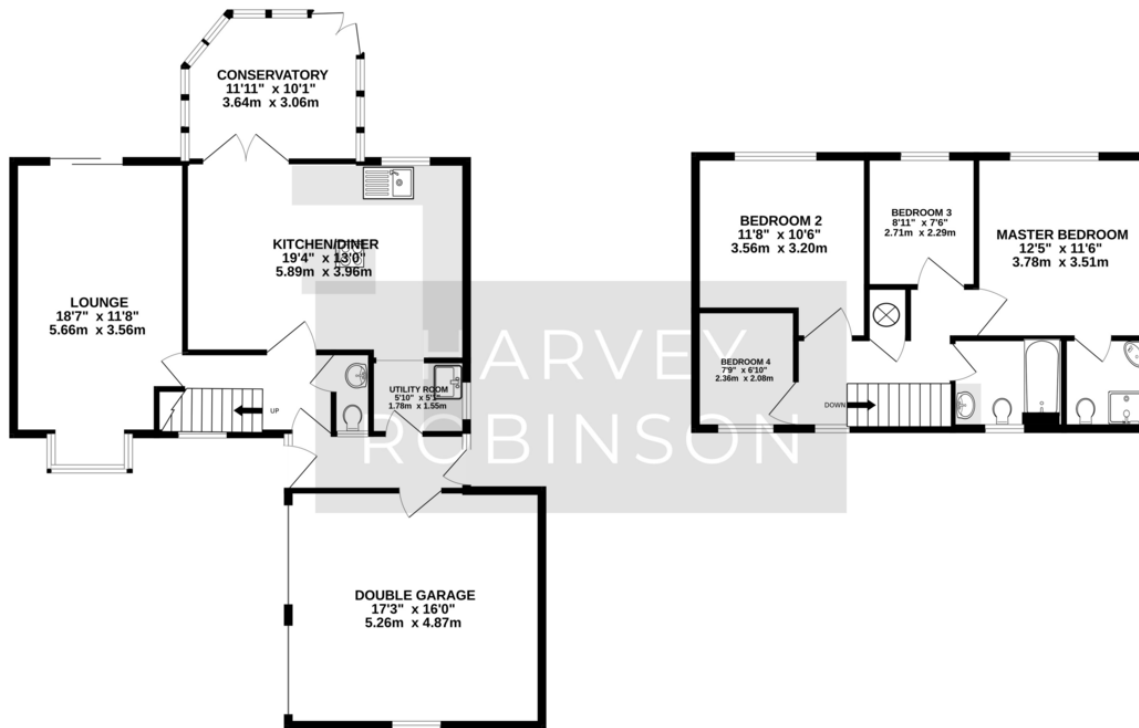
Harvey Robinson estate agents in St Neots are delighted to be marketing this well presented four-bedroom detached family home located at the end of a quiet cul-de-sac in Eaton Ford overlooking a small open green area. The property has undergone many improvements including a recently professionally landscaped rear garden, a re-fitted bathroom, and a large re-fitted open-plan kitchen/diner with a central island. The property benefits from a large, covered entrance porch, entrance hall, cloakroom, lounge, kitchen/diner, utility room and conservatory to the ground floor. To the first floor there are four bedrooms, an en-suite shower room, and a family bathroom. To the front of the property there is a recently replaced block paved driveway providing off-road parking leading to a double garage. Early viewing is advised, and appointments can be arranged by contacting our St Neots branch.





GROUND FLOOR  
1018 sq.ft. (94.6 sq.m.) approx.

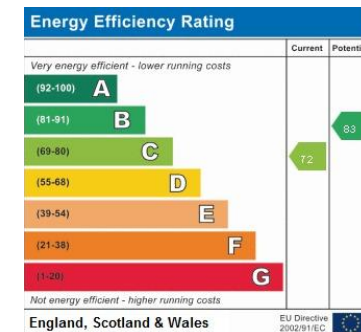
1ST FLOOR  
570 sq.ft. (53.0 sq.m.) approx.



TOTAL FLOOR AREA: 1588 sq.ft. (147.6 sq.m.) approx.  
Made with Metropix ©2023

## FAQs

Postcode for SatNav: PE19 7GZ  
 What3Words location: ///vest.w orkshops.handy man  
 Age of property: 1984  
 Council tax band: E  
 EPC rating: C  
 Garden aspect: East  
 Vendors onward movements: Moving closer to family, out of area  
 How long have the vendors lived here: Since 2016  
 How long have the owners lived here: Approx. 9 years  
 Rear boundary responsibility: Left  
 Primary catchment: Crosshall  
 Secondary catchment: Longsands  
 Water meter: Yes  
 Loft: Partially boarded



Agents Note: Whilst every care has been taken to prepare these particulars, they are for guidance purposes only. All measurements are approximate and are for general guidance purposes only and whilst every care has been taken to ensure their accuracy, they should not be relied upon and potential buyers/tenants are advised to recheck the measurements

HARVEY ROBINSON

### OFFICE ADDRESS

22 Market Square, St Neots,  
Cambridgeshire, PE19 2AF

### CONTACT

01480 454040  
stneots@harveyrobinson.co.uk  
www.harveyrobinson.co.uk