



HARVEY ROBINSON

Guide Price

£450,000

149 Christie Drive

Huntingdon, PE29 6JP

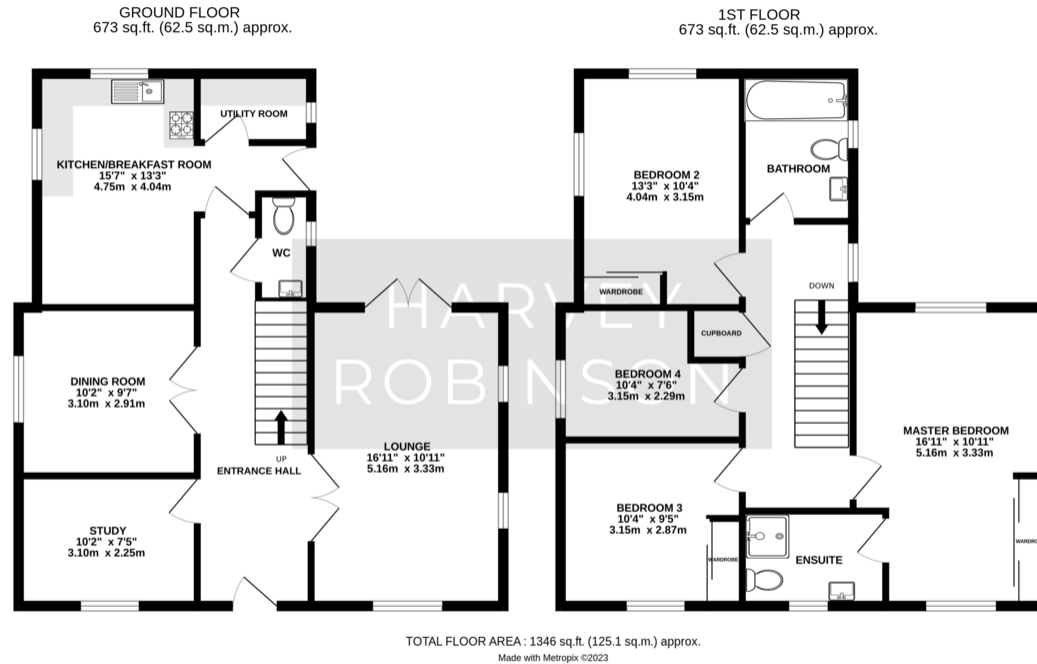
## PROPERTY SUMMARY

Harvey Robinson estate agents in Huntingdon proudly present this spacious Four Bedroom Detached Family Home situated in the highly sought-after area of Hinchingsbrooke in Huntingdon. Boasting around 1350 sq ft of living space, it's ideal for a growing family. The ground floor features a comfortable lounge, a separate dining room, and a versatile study that can easily double as a family room. Additionally, there's a modern open-plan kitchen/breakfast area, a utility room, and a cloakroom. Upstairs, you'll find three generous double bedrooms, a sizable single bedroom, a family bathroom, and an ensuite for the master bedroom. Outside, the property boasts an enclosed rear garden, a garage, and off-road parking. This residence is a must-see to truly appreciate. For more details or to arrange a viewing, please contact our Huntingdon Office.



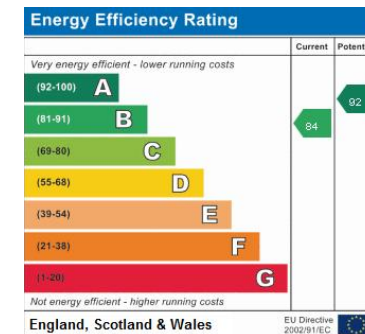


## FAQs



Tenure: Freehold  
 Council Tax Band: E  
 Vendors Onward Movements: Downsizing  
 Primary School Catchment: Cromwell Academy  
 Secondary School Catchment: Hinchingsbrooke  
 Age of Property: 2019  
 Boundary: Right-hand side  
 Water Meter: Yes  
 Age of Boiler: 2019  
 Age of Windows: 2019  
 What3Words Location: ///blurred.rider.acrobatic

Estate Charge: The seller advises that they do pay an estate management fee of £120 per year (last paid in March this year).



Agents Note: Whilst every care has been taken to prepare these particulars, they are for guidance purposes only. All measurements are approximate and are for general guidance purposes only and whilst every care has been taken to ensure their accuracy, they should not be relied upon and potential buyers/tenants are advised to recheck the measurements

HARVEY ROBINSON

### OFFICE ADDRESS

91 High Street, Huntingdon,  
Cambridgeshire, PE29 3DP

### CONTACT

01480 454040  
[huntingdon@harveyrobinson.co.uk](mailto:huntingdon@harveyrobinson.co.uk)  
[www.harveyrobinson.co.uk](http://www.harveyrobinson.co.uk)