



HARVEY ROBINSON

£215,000

133 Norfolk Road  
Huntingdon, PE29 1RH

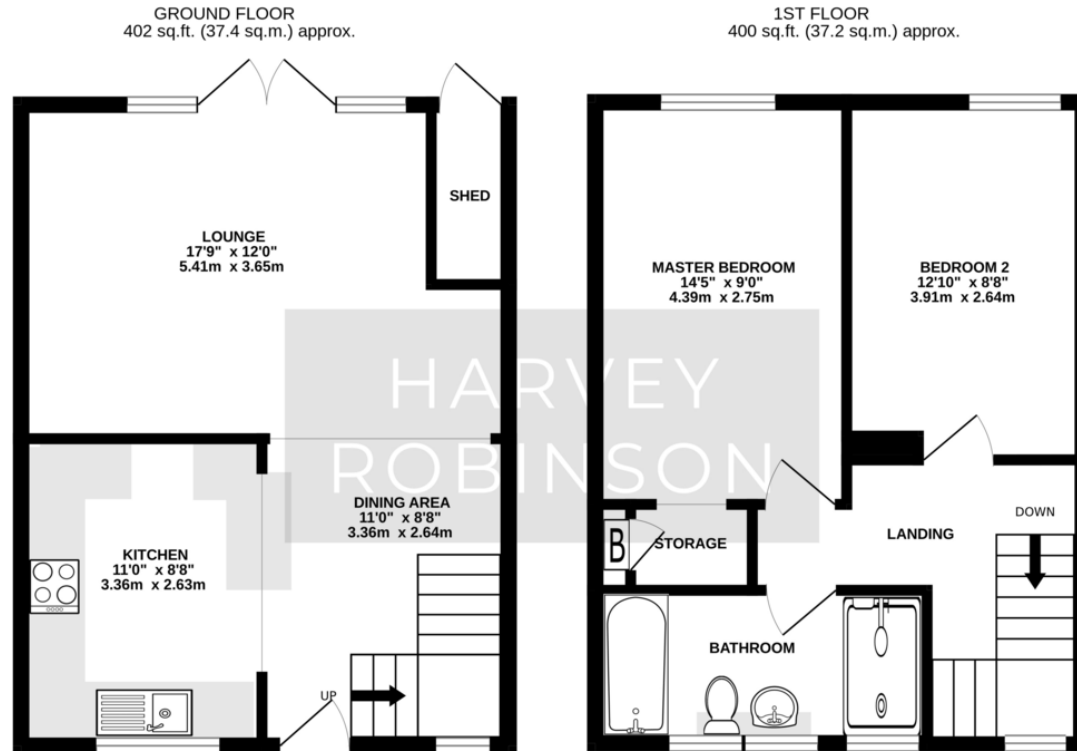


## PROPERTY SUMMARY

Harvey Robinson estate agents are delighted to offer for-sale this well presented two-bedroom end terraced house in Huntingdon. The property is positioned in a traffic-free location and overlooks a green to the rear, the current owner has modernised the property throughout and therefore it is a well-presented home that would make an ideal first purchase. Some of the improvements made by the current vendor include a re-fitted kitchen, opening up the downstairs accommodation to create open plan living, a re-fitted bathroom to the first floor and adding solar panels. In brief the accommodation comprises of an entrance area with stairs leading to the first floor, a dining area which is open plan to both the kitchen and lounge which has French door opening up to the rear split-level garden, to the first floor there are two double bedrooms and a large re-fitted bathroom. Please contact our Huntingdon branch to arrange a viewing.



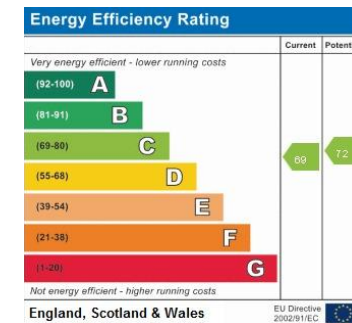




TOTAL FLOOR AREA : 803 sq.ft. (74.6 sq.m.) approx.  
Made with Metropix ©2023

## FAQs

Tenure: Freehold  
 Postcode for SatNav: PE29 1RH  
 What3Words location: ///tooth.luckier.whisk  
 Council tax band: A  
 Vendors onward movements: Downsizing  
 Garden aspect: South  
 How land has the owner lived here: Since 2012  
 Primary School Catchment: St John's CofE Primary School  
 Secondary School Catchment: St Peter's School  
 Water Meter: Yes  
 Loft: Boarded



Agents Note: Whilst every care has been taken to prepare these particulars, they are for guidance purposes only. All measurements are approximate and are for general guidance purposes only and whilst every care has been taken to ensure their accuracy, they should not be relied upon and potential buyers/tenants are advised to recheck the measurements

HARVEY ROBINSON

### OFFICE ADDRESS

91 High Street, Huntingdon,  
Cambridgeshire, PE29 3DP

### CONTACT

01480 454040  
[huntingdon@harveyrobinson.co.uk](mailto:huntingdon@harveyrobinson.co.uk)  
[www.harveyrobinson.co.uk](http://www.harveyrobinson.co.uk)