



HARVEY ROBINSON

£325,000

35 Pettit Road

Godmanchester, PE29 2DB

PROPERTY SUMMARY

Harvey Robinson are delighted to offer for sale this well presented Three Bedroom Semi Detached Family Home. Located in the popular location of Godmanchester this property briefly comprises of Lounge, Dining Room, Kitchen, Cloakroom, Three Bedrooms, Shower Room, Front and Rear Garden, Garage and Driveway Parking. For more information and to arrange a viewing please contact Harvey Robinson Estate Agents In Huntingdon.

3 

1 

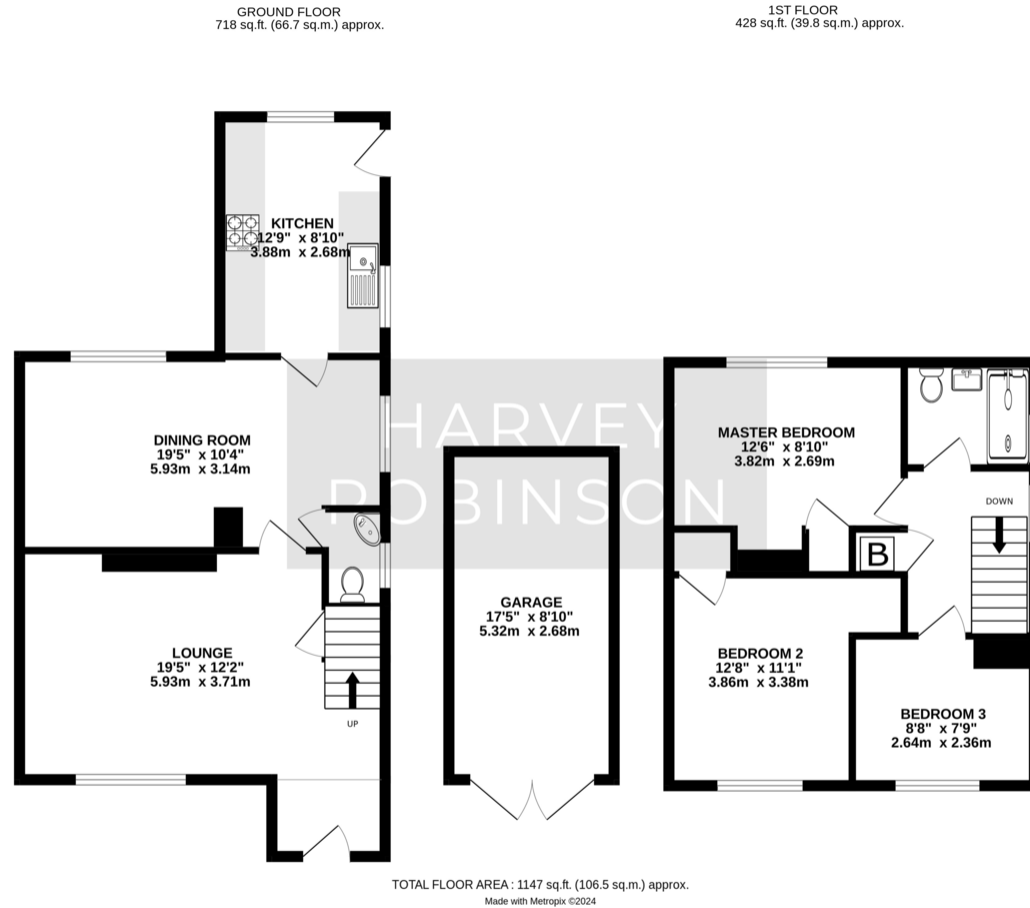
2 





FAQs

Type Here



| Score | Energy rating | Current | Potential |
|-------|---------------|---------|-----------|
| 92+ | A | | |
| 81-91 | B | | 83 B |
| 69-80 | C | | |
| 55-68 | D | 60 D | |
| 39-54 | E | | |
| 21-38 | F | | |

Agents Note: Whilst every care has been taken to prepare these particulars, they are for guidance purposes only. All measurements are approximate and are for general guidance purposes only and whilst every care has been taken to ensure their accuracy, they should not be relied upon and potential buyers/tenants are advised to recheck the measurements

HARVEY ROBINSON

OFFICE ADDRESS

91 High Street, Huntingdon,
Cambridgeshire, PE29 3DP

CONTACT

01480 454040
huntingdon@harveyrobinson.co.uk
www.harveyrobinson.co.uk