



HARVEY ROBINSON

Guide Price

£365,000

16 Garnatte Drive

Alconbury Weald, PE28 4GH

PROPERTY SUMMARY

*** GUIDE PRICE £365,000 to £375,000***

Harvey Robinson estate agents in Huntingdon are delighted to offer for sale this Spacious and upgraded Three Bedroom Semi Detached Townhouse. this property benefits from an open plan 25ft kitchen/dining/family room with doors to a rear enclosed garden with the addition of Gym/Office, separate utility room and cloakroom. A separate lounge is located on the first floor with stunning vaulted ceilings and double aspect windows to the front and rear of the property. The second double bedroom has jack & jill doors into the bathroom which comprises a four piece suite and the third bedroom is also situated on the first floor. The master bedroom is situated on the whole of the top floor including a dressing area and en-suite bathroom which also offers a stunning four piece suite. There is also Driveway parking under the carport. For more information and to arrange a viewing please contact Harvey Robins on estate agents in Huntingdon.

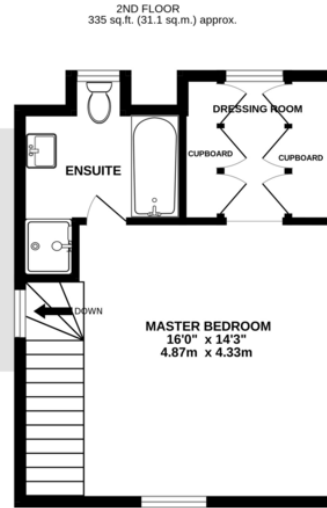
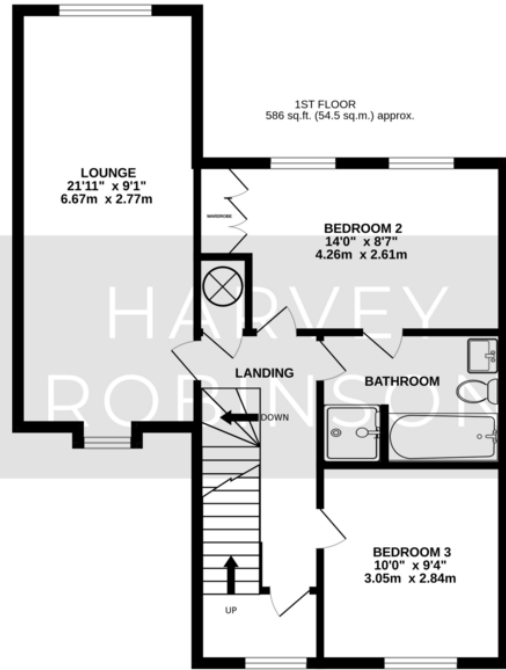
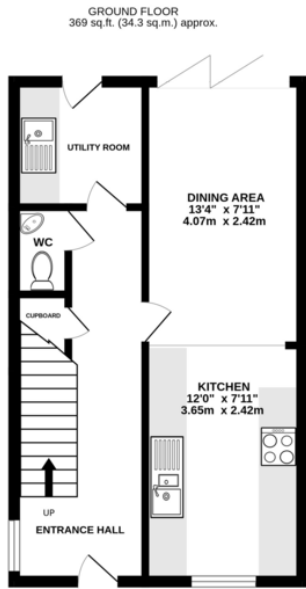
3 

2 

2 



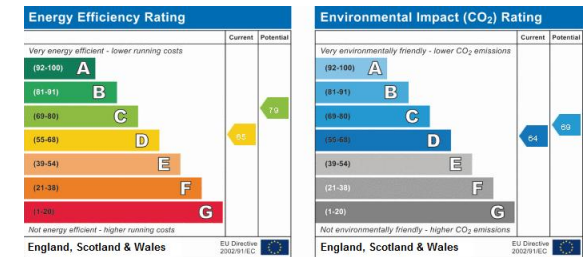




TOTAL FLOOR AREA : 1290 sq.ft. (119.9 sq.m.) approx.
Made with Metropix ©2024

FAQs

Tenure: Freehold
Estate Management Charge: TBC
Council Tax Band: D
Vendors Onward Movements: No chain
Primary School Catchment: Ermine Street Academy
Secondary School Catchment: Sawtry Village Academy
Developer: Morris Homes
WhatThreeWords: ///booth.senders.urge



Agents Note: Whilst every care has been taken to prepare these particulars, they are for guidance purposes only. All measurements are approximate and are for general guidance purposes only and whilst every care has been taken to ensure their accuracy, they should not be relied upon and potential buyers/tenants are advised to recheck the measurements

HARVEY ROBINSON

OFFICE ADDRESS

91 High Street, Huntingdon,
Cambridgeshire, PE29 3DP

CONTACT

01480 454040
huntingdon@harveyrobinson.co.uk
www.harveyrobinson.co.uk