



HARVEY ROBINSON

£580,000

Meadow View

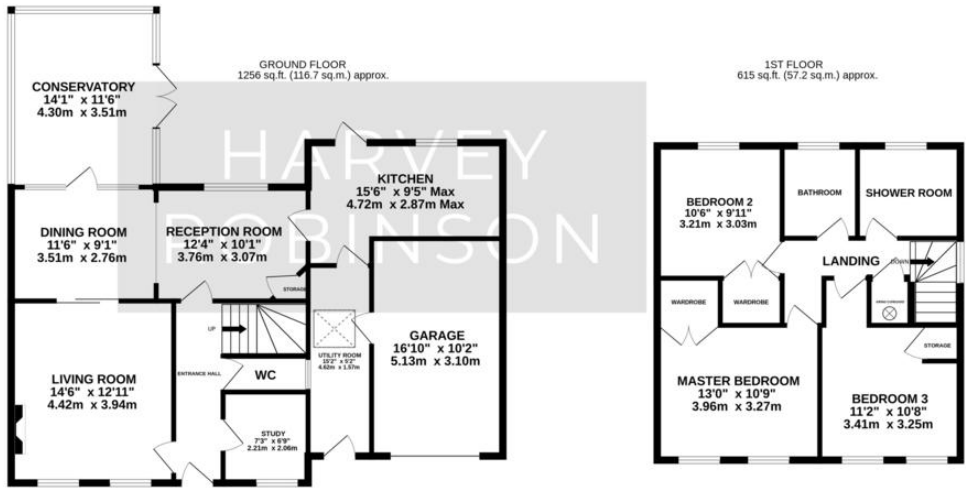
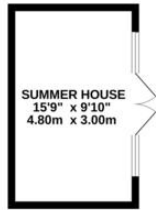
Eltisley, PE19 6TP

PROPERTY SUMMARY

Harvey Robinson estate agents in St Neots are delighted to offer for-sale with no onward chain this spacious and versatile three bedroom detached home located in the highly sought-after village of Eltisley and within the school catchment for Comberton Village College. The property has been well maintained and benefits from a re-fitted kitchen, bathroom and shower room within the last 5 years. The accommodation comprises of an entrance hall, cloakroom, study, living room, dining room, snug, conservatory, kitchen, and utility room to the ground floor. To the first floor there are three bedrooms, a bathroom, and a shower room. Outside there is off-road parking, a single garage, and a private, well stocked rear garden that houses a timber summer house. The property benefits from no onward chain and early viewing is advised, please contact our St Neots branch to arrange an appointment.



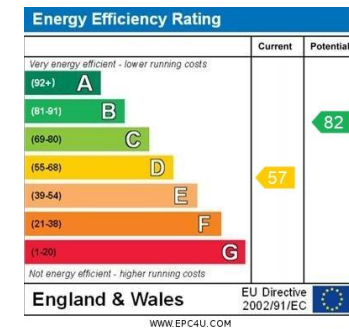




TOTAL FLOOR AREA : 1871 sq.ft. (173.9 sq.m.) approx.
 Made with Metropix ©2024

FAQs

Postcode for SatNav: PE19 6TP
 What3Words location:
 ///fund.clip.euphoric
 Council tax: E
 Vendors onward movements: No chain
 Garden aspect: W
 Primary catchment: Newton Primary School
 Secondary catchment: Comberton Village College
 Boiler: Serviced annually



Agents Note: Whilst every care has been taken to prepare these particulars, they are for guidance purposes only. All measurements are approximate and are for general guidance purposes only and whilst every care has been taken to ensure their accuracy, they should not be relied upon and potential buyers/tenants are advised to recheck the measurements

HARVEY ROBINSON

OFFICE ADDRESS
 22 Market Square, St Neots,
 Cambridgeshire, PE19 2AF

CONTACT
 01480 454040
 stneots@harveyrobinson.co.uk
 www.harveyrobinson.co.uk