



HARVEY ROBINSON

£260,000

17 Field Walk

Godmanchester, PE29 2DL

## PROPERTY SUMMARY

Harvey Robinson estate agents in Huntingdon are delighted to offer for sale with No Onward Chain this Three Bedroom Terraced Family Home. Located in the popular town of Godmanchester this well presented property briefly comprises of Entrance Hall, Cloakroom, Lounge, Kitchen/Diner, Three Bedrooms, Family Bathroom and Enclosed Rear Garden. For more information and to arrange a viewing please contact Harvey Robinson Estate Agents in Huntingdon.

3



1



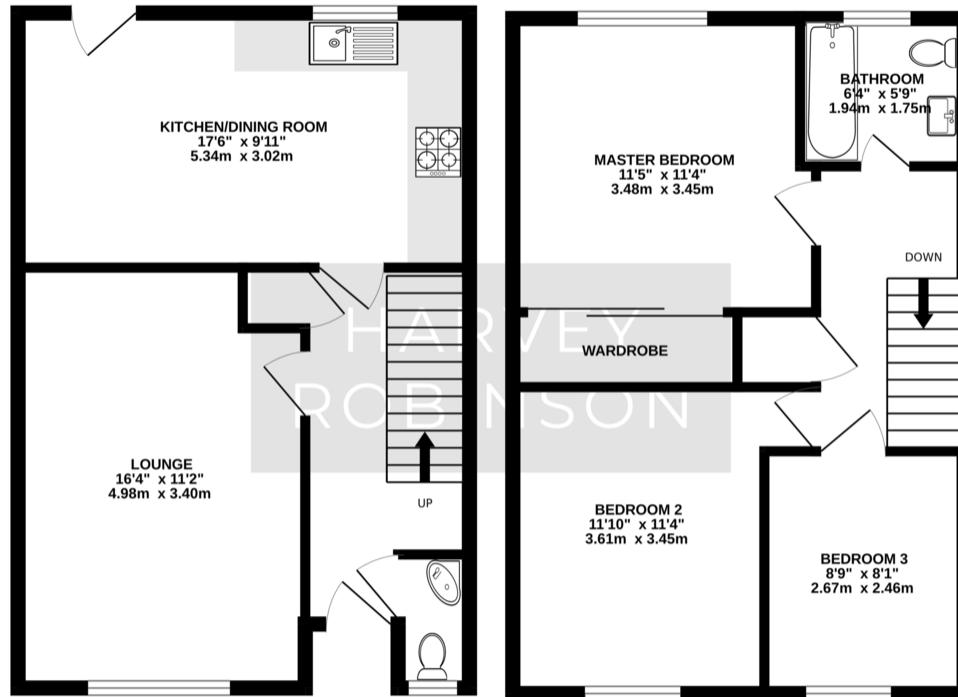
1





GROUND FLOOR  
450 sq.ft. (41.8 sq.m.) approx.

1ST FLOOR  
459 sq.ft. (42.7 sq.m.) approx.



TOTAL FLOOR AREA: 909 sq.ft. (84.5 sq.m.) approx.  
Made with Metroplex ©2024

Agents Note: Whilst every care has been taken to prepare these particulars, they are for guidance purposes only. All measurements are approximate and are for general guidance purposes only and whilst every care has been taken to ensure their accuracy, they should not be relied upon and potential buyers/tenants are advised to recheck the measurements

HARVEY ROBINSON

**OFFICE ADDRESS**

91 High Street, Huntingdon,  
Cambridgeshire, PE29 3DP

**CONTACT**

01480 454040  
huntingdon@harveyrobinson.co.uk  
www.harveyrobinson.co.uk