



HARVEY ROBINSON

£525,000

5 Old Glebe

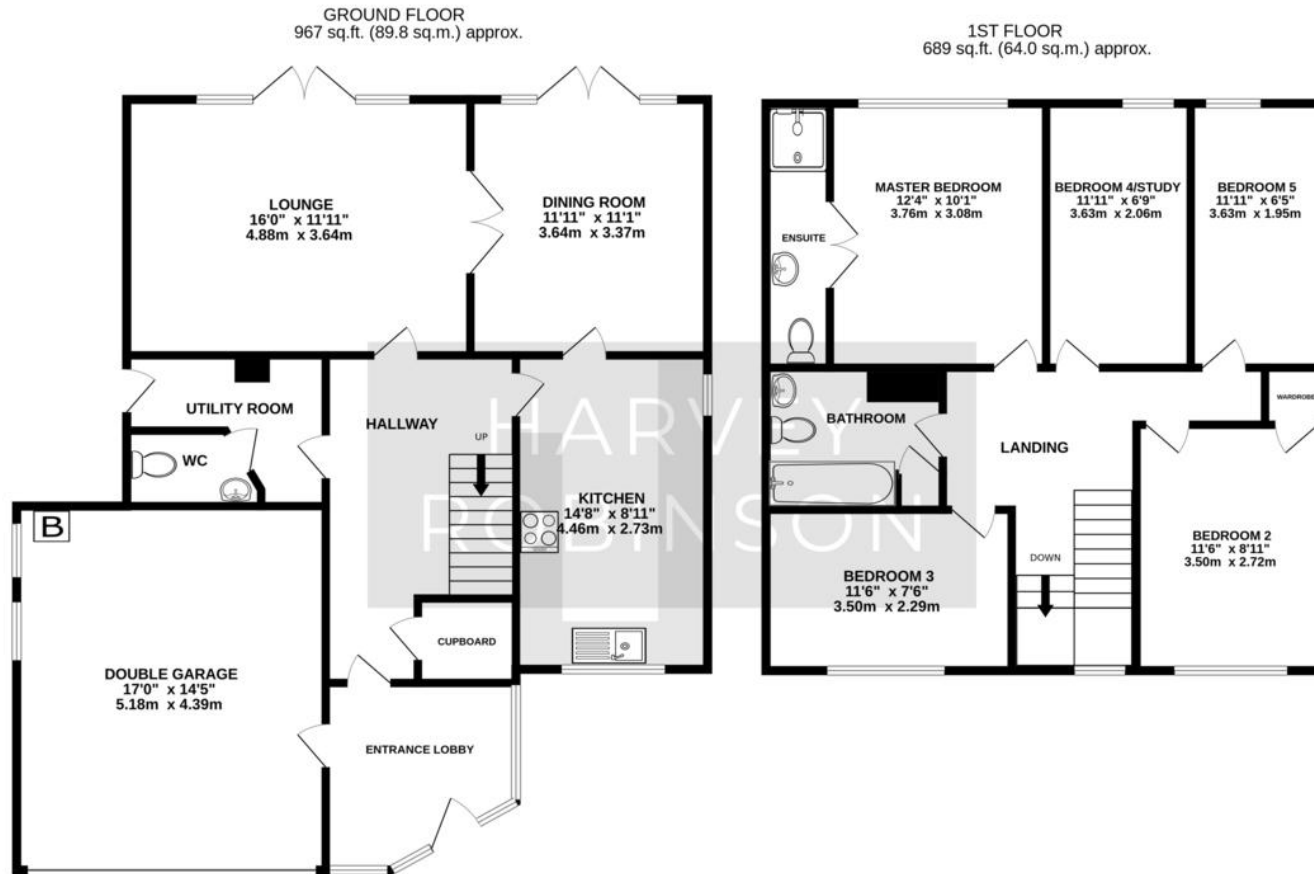
Alconbury, PE28 4EA

Harvey Robinson Estate Agents in Huntingdon are proud to bring to market this Five Bedroom Detached Family home located in the highly desirable village of Alconbury. Offering over 1600 square feet of well-designed living space, this spacious property is perfect for family life. The ground floor comprises an entrance porch/lobby, a large hallway, a convenient utility room and cloakroom, a bright lounge that opens seamlessly into the dining room both featuring French doors that lead out to the garden and a modern, refitted kitchen. Upstairs, the home offers five generously sized bedrooms. The master bedroom benefits from an ensuite shower room, while the family bathroom serves the remaining bedrooms. Outside, you will find a wraparound garden with off road parking to the front as well as a double integral garage with electric door.

To fully appreciate all that this property has to offer, we highly recommend a viewing. For more information or to arrange a visit to this exceptional home, please contact our Huntingdon office.







TOTAL FLOOR AREA : 1656 sq.ft. (153.8 sq.m.) approx.
 Made with Metropix ©2024

FAQs

Council Tax Band : E
 Age of Property: 1969
 Primary School Catchment: Alconbury C of E
 Secondary School Catchment: Sawtry
 Water Meter: Yes
 Boiler: 2004, fully serviced
 Loft: Part boarded with ladder
 Flood Risk: Low Risk (0.1% - 1 in every 1000)
 What3Words Location:
<https://what3words.com/cape.secret.fierly>

Score	Energy rating	Current	Potential
92+	A		
81-91	B		82 B
69-80	C		
55-68	D	60 D	
39-54	E		
21-38	F		
1-20	G		

Agents Note: Whilst every care has been taken to prepare these particulars, they are for guidance purposes only. All measurements are approximate and are for general guidance purposes only and whilst every care has been taken to ensure their accuracy, they should not be relied upon and potential buyers/tenants are advised to recheck the measurements

HARVEY ROBINSON

OFFICE ADDRESS

91 High Street, Huntingdon,
 Cambridgeshire, PE29 3DP

CONTACT

01480 454040
huntingdon@harveyrobinson.co.uk
www.harveyrobinson.co.uk