



HARVEY ROBINSON

Guide Price

£400,000

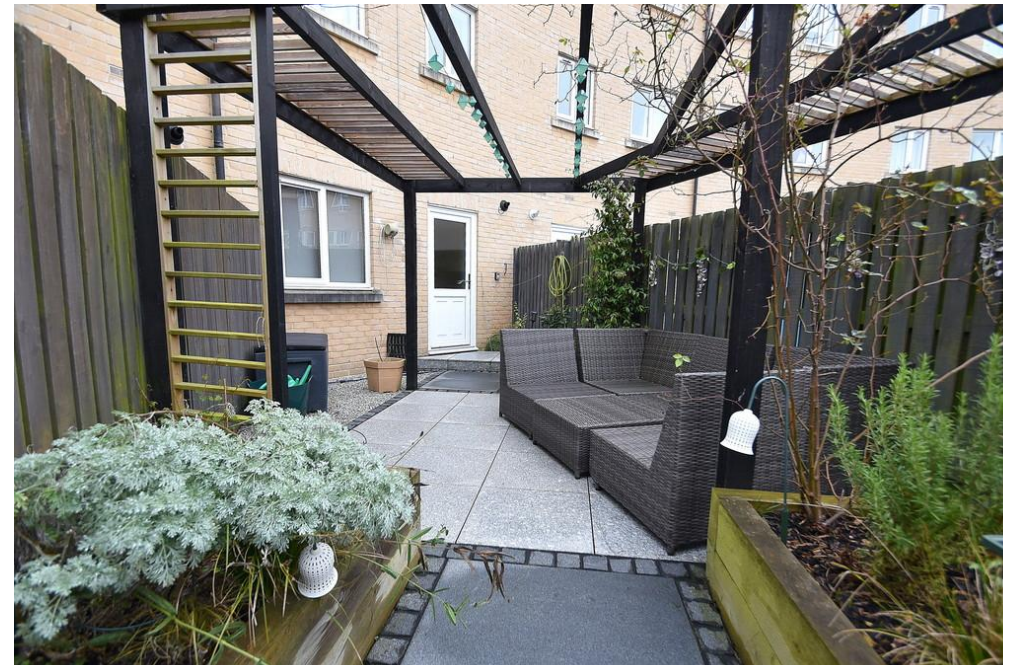
Skipper Way

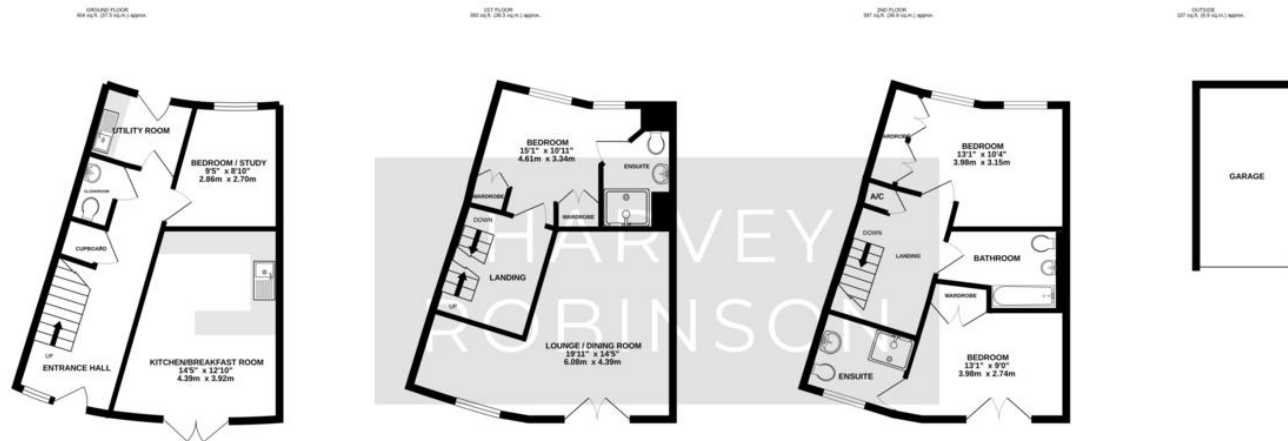
Little Paxton, PE19 6LT

Harvey Robinson estate agents in St Neots are delighted to offer for sale this three/four bedroom family town house located within the hugely popular and sought after Skipper Way in Little Paxton. The versatile and spacious accommodation is spread across three expansive floors and in brief consists of an entrance hall, a cloakroom, a good size kitchen/dining room with French-style doors leading out to the front, a utility room and a study/bedroom four to the ground floor. A large lounge with French-style doors opening to a Juliette balcony, and a double bedroom with ensuite facilities can be found occupying the first floor. Two further double bedrooms, one with ensuite facilities and a Juliette balcony, and a family bathroom is located on the second floor. Built in double wardrobes are present in all bedrooms. Outside, the rear garden has been thoughtfully landscaped incorporating separate seating areas – perfect for outside dining and entertaining, with rear gated access leading to the allocated car parking and single garage. This property must be viewed to fully appreciate the size and location on offer.

- 4 
- 3 
- 2 



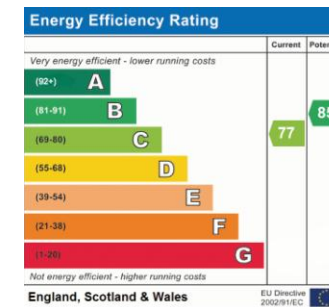




TOTAL FLOOR AREA : 1300 sq.ft. (120.7 sq.m.) approx.
Made with Metropix ©2025

FAQs

Tenure: Freehold
 Council Tax: Band E
 Rear Garden: West
 Primary School Catchment: Little Paxton Primary
 Secondary School Catchment: Longsands
 Water Meter: Yes
 What3Words Location: ///megawatt.erupted.froth
 Annual Estate Charge: £406.96 P/A
 Boiler Installed: Oct 2017
 Boiler Last Serviced: Oct 2024
 EPC Rating: C



Agents Note: Whilst every care has been taken to prepare these particulars, they are for guidance purposes only. All measurements are approximate and are for general guidance purposes only and whilst every care has been taken to ensure their accuracy, they should not be relied upon and potential buyers/tenants are advised to recheck the measurements

HARVEY ROBINSON

OFFICE ADDRESS

22 Market Square, St Neots,
Cambridgeshire, PE19 2AF

CONTACT

01480 454040
stneots@harveyrobinson.co.uk
www.harveyrobinson.co.uk