



HARVEY ROBINSON

Guide Price
£300,000-£325,000
14 Jeffrey Drive
Sapley, PE28 2GF

PROPERTY SUMMARY

Harvey Robinson Estate Agents are pleased to present this spacious four-bedroom, end-of-terrace townhouse in Huntingdon's popular Sapley area. Built in 2005, this well-designed home provides generous accommodation across three floors, perfect for families or those seeking extra space. The ground floor features an entrance hall, a convenient cloakroom, an open-plan lounge and dining area, and a modern, refitted kitchen/breakfast room. On the first floor, you'll find two large double bedrooms and a modern updated family bathroom. The top floor is dedicated to a sizeable master suite complete with an ensuite bathroom, along with an additional fourth bedroom that could serve as a fourth bedroom, study or even walk in wardrobe!

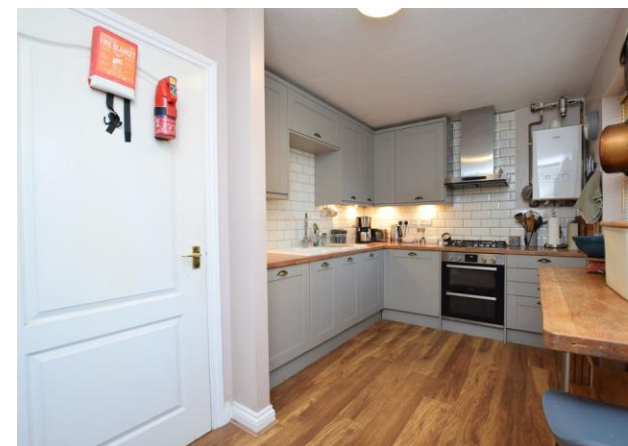
Outside, the property boasts an enclosed rear garden with private access to a garage and off-road parking.

This property is a must see. For more details or to arrange a viewing, please contact our Huntingdon office.

4 

2 

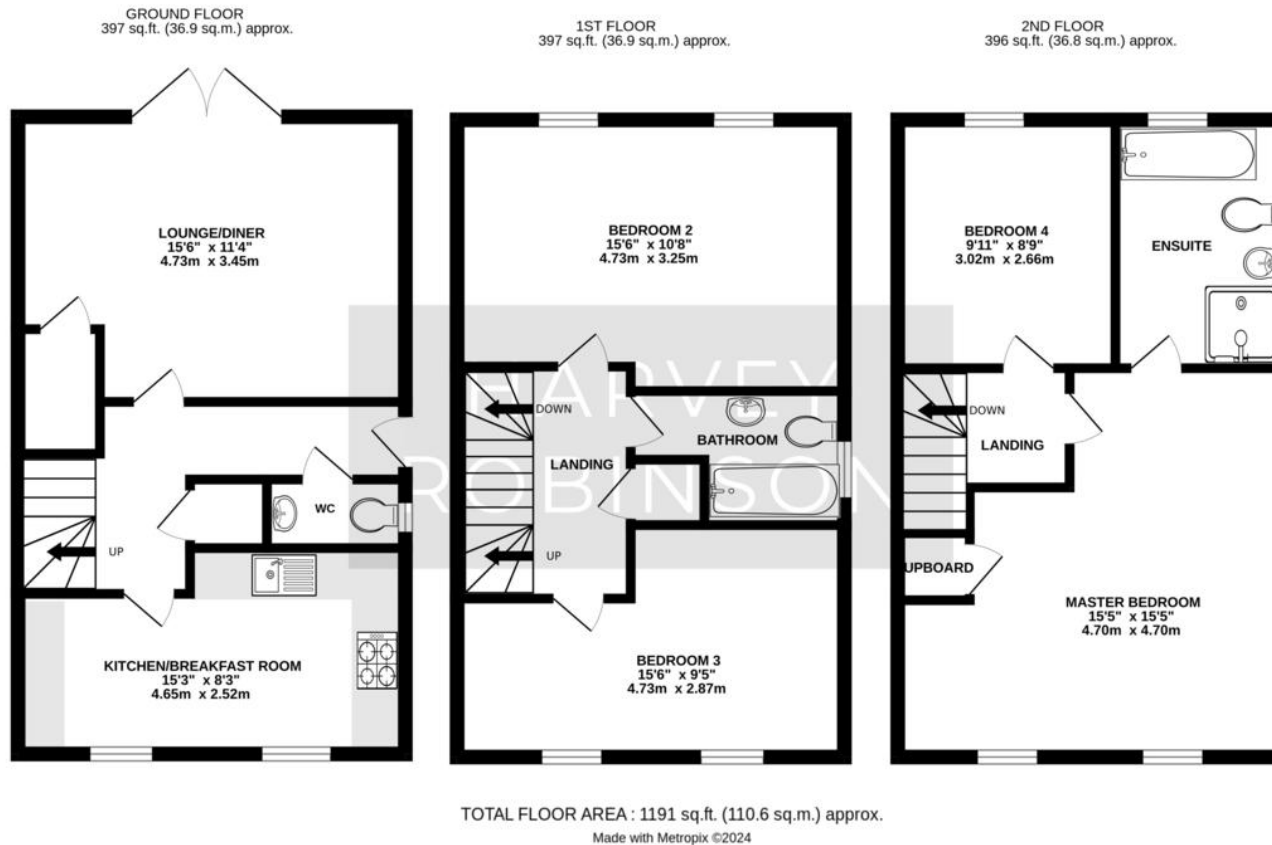
1 





FAQs

Tenure: Freehold
Council Tax Band: D
Vendors Onward Movements: Upsizing locally



Agents Note: Whilst every care has been taken to prepare these particulars, they are for guidance purposes only. All measurements are approximate and are for general guidance purposes only and whilst every care has been taken to ensure their accuracy, they should not be relied upon and potential buyers/tenants are advised to recheck the measurements

HARVEY ROBINSON

OFFICE ADDRESS

91 High Street, Huntingdon,
Cambridgeshire, PE29 3DP

CONTACT

01480 454040
huntingdon@harveyrobinson.co.uk
www.harveyrobinson.co.uk