

A row of modern townhouses. The leftmost unit is painted a vibrant blue and features a white door with the number 63. The middle unit has a cream-colored ground floor and a dark wood-clad upper floor, with a white door and the number 65. The rightmost unit is cream-colored with a balcony and a dark door. The houses have multiple windows with dark frames. A street lamp is visible on the left, and a green bin is near the middle unit. The foreground shows a paved area and a grassy verge.

HARVEY ROBINSON

£310,000

65 Dramsell Rise

St. Neots, PE19 6HL

## PROPERTY SUMMARY

Harvey Robinson estate agents are delighted to offer for sale this wonderfully presented three bedroom town house in the sought after and highly convenient Loves Farm development in St Neots.

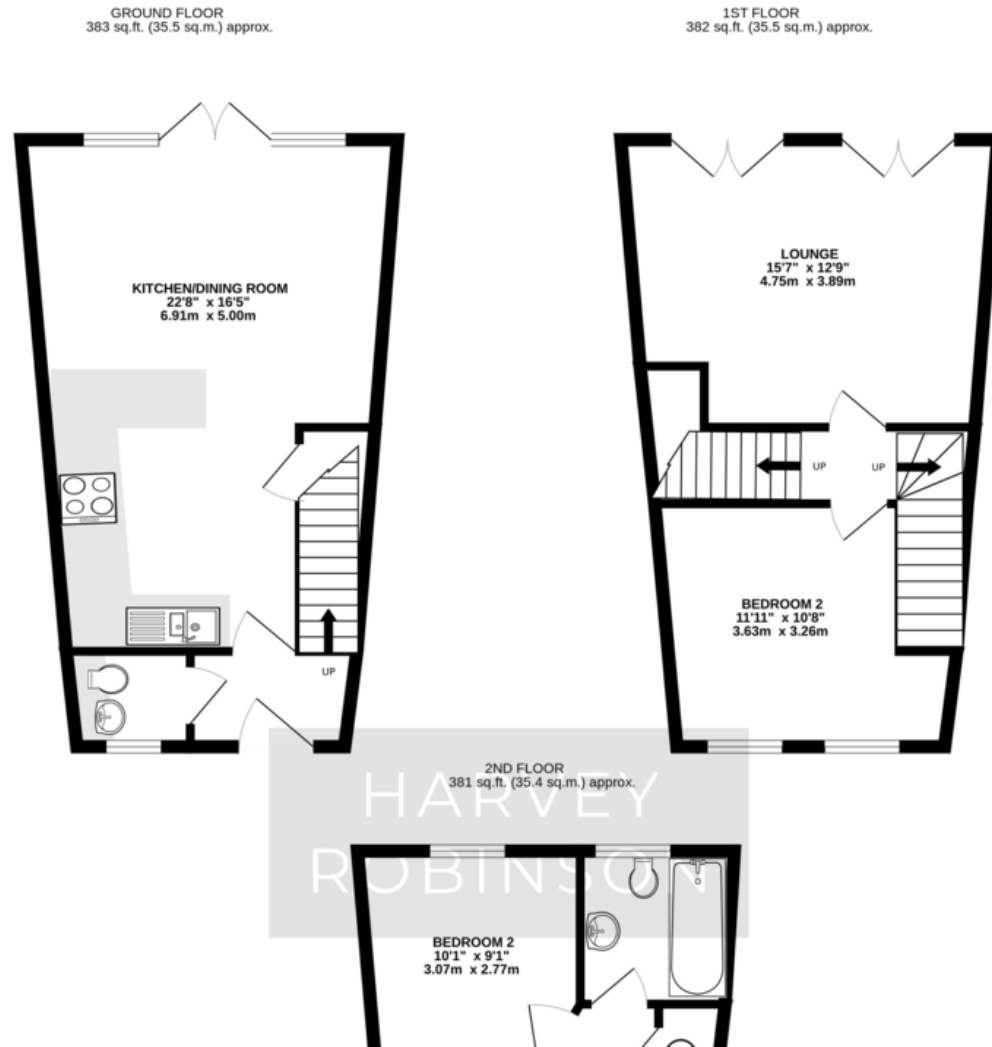
The property in full, comprises of an entrance hall, downstairs cloakroom, spacious and modern kitchen/diner to the ground floor. Moving to the first floor you will find a large lounge with double Juliette balconies and a double bedroom. Finishing up on the second floor, you have a spacious double which boasts an en-suite, a further double bedroom and the family bathroom. To the rear of the property you will find a well presented and low maintenance garden which then leads to the off road parking.





## FAQs

Type Here



Energy Efficiency Rating		Current	Potential
<i>Vary energy efficient - lower running costs</i>			
(92+)	A		96
(81-91)	B	86	
(69-80)	C		
(55-68)	D		
(39-54)	E		
(21-38)	F		
(1-20)	G		
<i>Not energy efficient - higher running costs</i>			
<b>England &amp; Wales</b>		EU Directive 2002/91/EC	
WWW.EPC4U.COM			

Agents Note: Whilst every care has been taken to prepare these particulars, they are for guidance purposes only. All measurements are approximate and are for general guidance purposes only and whilst every care has been taken to ensure their accuracy, they should not be relied upon and potential buyers/tenants are advised to recheck the measurements

HARVEY ROBINSON

### OFFICE ADDRESS

22 Market Square, St Neots,  
Cambridgeshire, PE19 2AF

### CONTACT

01480 454040  
stneots@harveyrobinson.co.uk  
www.harveyrobinson.co.uk