



HARVEY ROBINSON

Offers In Excess Of
£290,000

Hardwick Road
Eynesbury, PE19 2UE

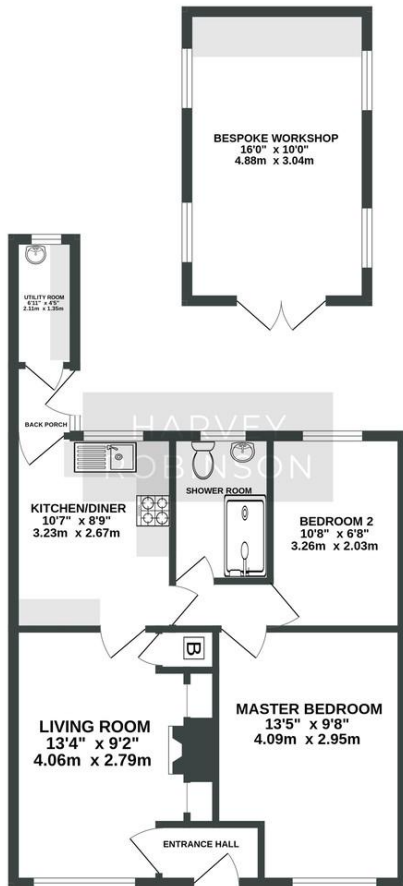
PROPERTY SUMMARY

Harvey Robinson estate agents in St Neots are delighted to offer for-sale this two-bedroom semi-detached bungalow located in the Eynesbury area, close to local amenities and within walking distance of the town centre. The bungalow has been well maintained by the current owner and in recent years has benefited from a re-fitted shower room, a replacement boiler, and has been redecorated and carpeted. Externally there are low maintenance gardens to the front and rear with off-road parking available to the front and there is a large timber workshop within the rear garden measuring 16ft x 10ft. Internally there is an entrance hall, lounge, kitchen, inner hall, two bedrooms, a shower room, a rear porch and a utility room. Viewing is highly recommended, please contact our St Neots branch to arrange a viewing.





GROUND FLOOR
725 sq.ft. (67.3 sq.m.) approx.



TOTAL FLOOR AREA: 725 sq.ft. (67.3 sq.m.) approx.
Made with Metropix ©2024

FAQs

Postcode for SatNav: PE19 2UE

What3Words Location:

///snowy.limp.deprives

Council tax: B

Garden aspect: East

Vendors onward movements: Moving to

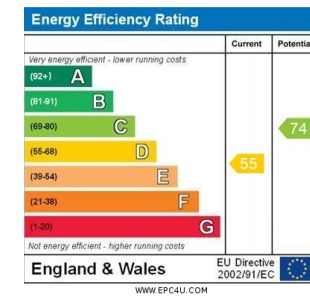
Derbyshire to be closer to family

How long has the owner lived here: Since 2022

Property Built: 1953

Loft: Fitted Ladder, Boarded, With Light

Water Meter: Yes



Agents Note: Whilst every care has been taken to prepare these particulars, they are for guidance purposes only. All measurements are approximate and are for general guidance purposes only and whilst every care has been taken to ensure their accuracy, they should not be relied upon and potential buyers/tenants are advised to recheck the measurements

HARVEY ROBINSON

OFFICE ADDRESS

22 Market Square, St Neots,
Cambridgeshire, PE19 2AF

CONTACT

01480 454040
stneots@harveyrobinson.co.uk
www.harveyrobinson.co.uk