



HARVEY ROBINSON

£300,000

157 Christie Drive

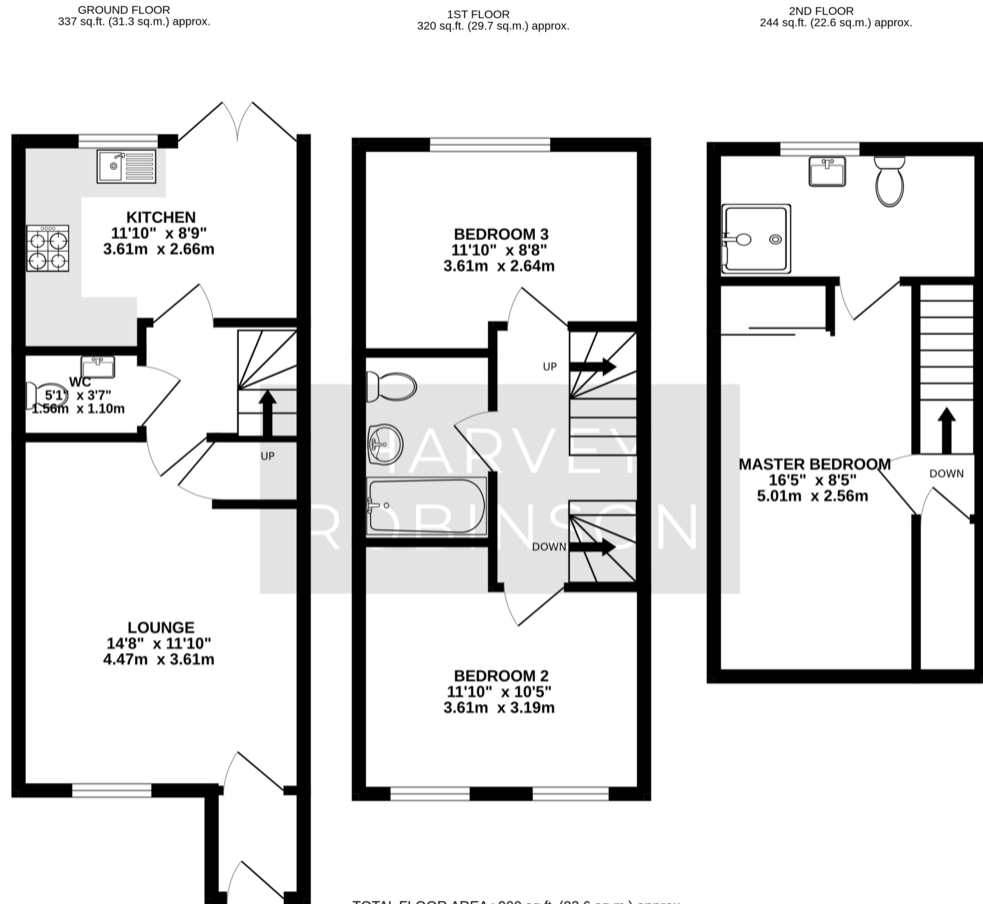
Hinchingbrooke, PE29 6JP

## PROPERTY SUMMARY

Harvey Robinson Estate Agents are delighted to offer for sale this immaculately presented Three Bedroom Family Home. Located in this popular part of Hinchbrooke this property briefly comprises of Entrance Hall, Lounge, Kitchen/Diner, Cloakroom, Three Bedrooms, Family Bathroom, Ensuite To Master, Enclosed Rear Garden, Allocated Parking. For more information and to arrange a viewing please contact Harvey Robinson Estate Agents in Huntingdon.







## FAQs

Built: 2019  
 Council Tax: Band C  
 EPC: B  
 Current Owner: Owned 5 years, Looking to  
 upsize locally  
 Rear Garden: North Facing  
 Primary School Catchment: Cromwell  
 Academy  
 Secondary School Catchment:  
 Hinchingsbrooke  
 Water Meter: Yes located in front garden  
 Loft: Partly boarded  
 Ground Rent: £195 per year

Score	Energy rating	Current	Potential
92+	A		95 A
81-91	B	84 B	
69-80	C		
55-68	D		
39-54	E		
21-38	F		
1-20	G		

Agents Note: Whilst every care has been taken to prepare these particulars, they are for guidance purposes only. All measurements are approximate and are for general guidance purposes only and whilst every care has been taken to ensure their accuracy, they should not be relied upon and potential buyers/tenants are advised to recheck the measurements

HARVEY ROBINSON

### OFFICE ADDRESS

91 High Street, Huntingdon,  
 Cambridgeshire, PE29 3DP

### CONTACT

01480 454040  
 huntingdon@harveyrobinson.co.uk  
 www.harveyrobinson.co.uk