



HARVEY ROBINSON

£350,000
Temple Close
Huntingdon, PE29 3QX

Harvey Robinson Estate Agents are thrilled to present this charming three-bedroom, semi-detached cottage, located in the heart of Huntingdon's town centre. Built in 1902, this home is steeped in Edwardian character, with original features like high ceilings, beautiful sash windows, original tiling and exposed wooden floorboards.

In 2016, the current owners thoughtfully extended and modernised the property, adding a convenient utility room, a new shower room, and creating a larger, open-plan kitchen and breakfast area. This updated kitchen space features high-quality fittings, seamlessly blending modern comfort with the home's period charm.

The cottage offers generous living spaces, including a bright and spacious lounge with bay windows, a separate dining room complete with a cosy wood-burning stove, and three well-proportioned double bedrooms. Upstairs, you'll find an additional family bathroom.

Outside, the property features an enclosed rear garden.

For further details or to arrange a viewing, please contact our Huntingdon office.

3 

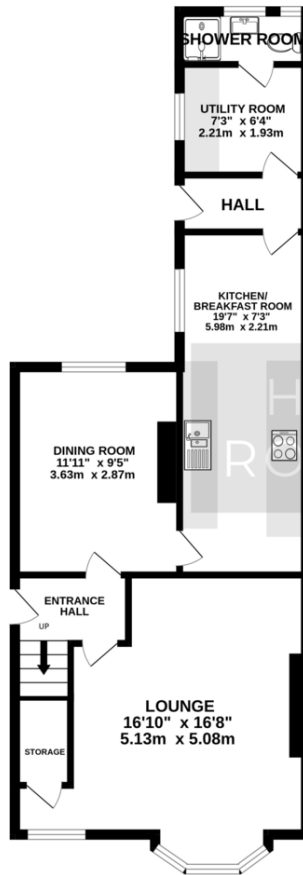
2 

2 

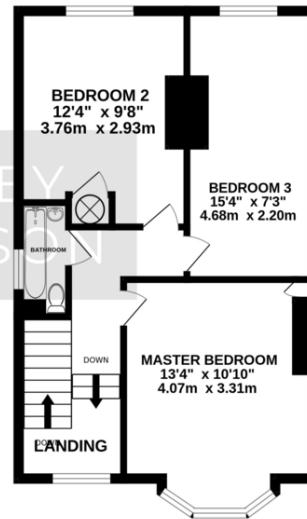




GROUND FLOOR
593 sq.ft. (55.1 sq.m.) approx.



1ST FLOOR
449 sq.ft. (41.7 sq.m.) approx.



TOTAL FLOOR AREA: 1041 sq.ft. (96.7 sq.m.) approx.
Made with Metropix ©2024

FAQs

Tenure: Freehold

Council Tax Band: C

Age of Property: Circa 1902
(Edwardian)

Water Meter: Yes, at the front

Onward Chain: Yes

Loft: Boarded with light & ladder

EPC TBC

Agents Note: Whilst every care has been taken to prepare these particulars, they are for guidance purposes only. All measurements are approximate and are for general guidance purposes only and whilst every care has been taken to ensure their accuracy, they should not be relied upon and potential buyers/tenants are advised to recheck the measurements

HARVEY ROBINSON

OFFICE ADDRESS

91 High Street, Huntingdon,
Cambridgeshire, PE29 3DP

CONTACT

01480 454040
huntingdon@harveyrobinson.co.uk
www.harveyrobinson.co.uk