



HARVEY ROBINSON

Offers In Region Of
£250,000

61 Orthwaite

Stukeley Meadows, PE29 6XB

Harvey Robinson Estate Agents are pleased to bring to market, this well presented Three Bedroom Mid Terraced home, situation in the well sought after location of Orthwaite, Stukeley Meadows. Providing over 650 sq. ft of accommodation, the ground floor consists of an entrance hall, cloakroom, a fitted kitchen and a large living/dining room. As you move upstairs, you have a spacious landing with two generous double bedrooms, a single bedroom, a family bathroom and an airing cupboard. Externally, the property has off road parking, a single garage and an enclosed rear garden. Offered with no onward chain, this home is a fantastic opportunity for you. Stukeley Meadows is a very sought after area within Huntingdon which is thoughtfully situated close to all amenities.

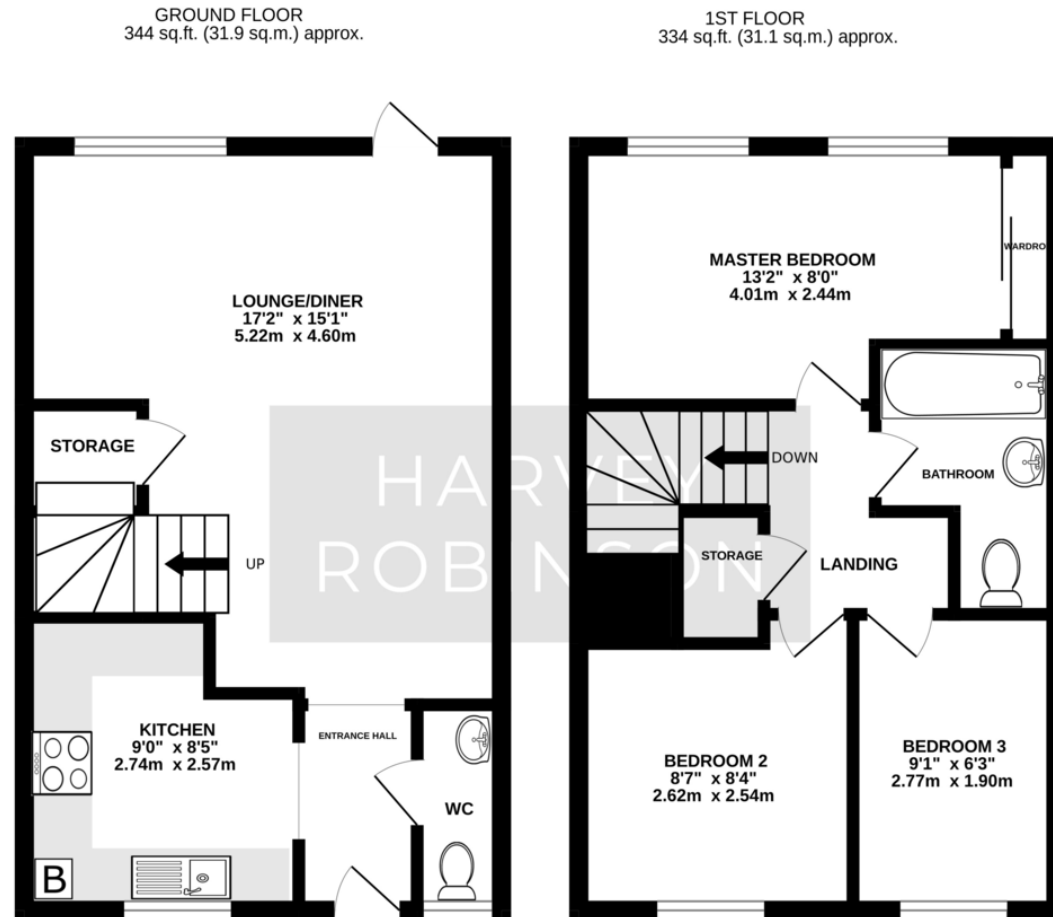
Huntingdon's town centre is located a few minutes' drive from Stukeley Meadows and offers a vast range of shops, library, vets & GP surgeries. Using a walkway located at the end of Lake Way, is a shortcut to Huntingdon's Train Station which is only a 15 minute walk from the property itself making this an ideal location for commuters looking for easy access into London's Kings Cross that gets you there within the hour. Supermarkets Aldi & Lidl are also located within a 15 minute walk from the property as well as having a Tesco Metro on the estate.

Major road links A14 & A1 are also within easy reach. Stukeley Meadows is within the popular school catchments of Stukeley Meadows Primary School & St. Peters Secondary School. Nothing is too far away from the estate whether it is by a short drive or walk.

- 3 
- 1 
- 1 







TOTAL FLOOR AREA : 678 sq.ft. (63.0 sq.m.) approx.
 Made with Metropix ©2025

FAQs

Tenure: Freehold
 Council Tax Band: B
 Vendors Onward Movements: No onward chain
 What3Words Location: [///splint.balancing.images](https://www.what3words.com/splint.balancing.images)
 Garage Location: [///lurching.dripping.melons](https://www.what3words.com/lurching.dripping.melons)

Agents Note: Whilst every care has been taken to prepare these particulars, they are for guidance purposes only. All measurements are approximate and are for general guidance purposes only and whilst every care has been taken to ensure their accuracy, they should not be relied upon and potential buyers/tenants are advised to recheck the measurements

HARVEY ROBINSON

OFFICE ADDRESS

91 High Street, Huntingdon,
 Cambridgeshire, PE29 3DP

CONTACT

01480 454040
huntingdon@harveyrobinson.co.uk
www.harveyrobinson.co.uk